



LOGIQ™ E10 Series

Empowering you to make the difference.

gehealthcare.com

Always ready. Always by your side.



The LOGIQ E10 Series empowers you to make a difference in your patients' lives by supporting your expertise with next-generation, leadership ultrasound.

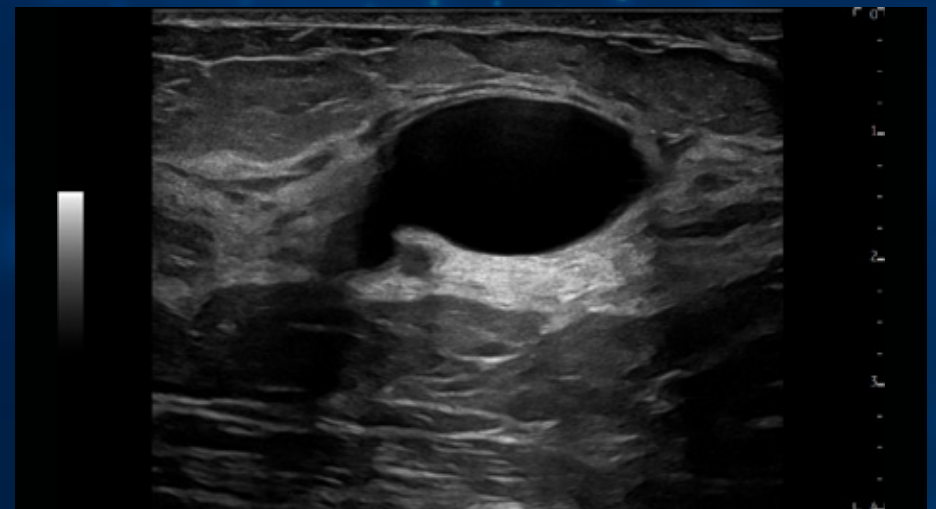
Choose from a wide array of advanced imaging tools and robust productivity enhancers based on artificial intelligence—all on a scalable platform that lets you configure your system specifically to the needs of your practice.

Take advantage of our most technologically-advanced ultrasound ever to bring fast, precise, consistent imaging to your patients—your way—with the LOGIQ E10 Series.

Next-generation, leadership ultrasound...
always ready, always by your side

Confident Diagnosis

Enhance your capabilities with our proven, high-performance cSound™ Architecture, now with new Advanced Speckle Reduction Imaging (SRI). Together with versatile XDclear™ probes, these innovative technologies deliver extraordinary image quality to help you address a wide range of clinical applications—head to toe, obese to thin, neonate to geriatric—with confidence.



Breast cyst, ML4-20-D

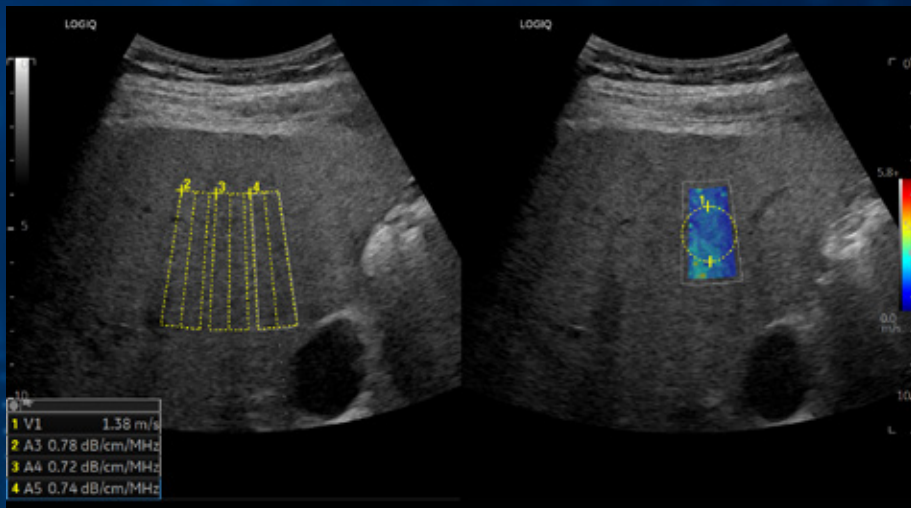
Comprehensive Tools

The LOGIQ E10 Series provides a selection of robust tools that give clinicians a new level of confidence in their diagnostic decisions, including:

2D Shear Wave Elastography – Enables quantitative assessment of tissue elasticity. Now available with a Shear Wave Elastography Quality Indicator to support confident measurements.

Ultrasound-Guided Attenuation Parameter (UGAP) – Enables quantification of liver steatosis to aid in early identification and monitoring of patients with NAFLD, NASH or ASH.

Photo Assistant app – Acquire photos of relevant anatomy via an Android™ smart device and add them to the report with the clinical images for valuable context.



Hepatic Assistant

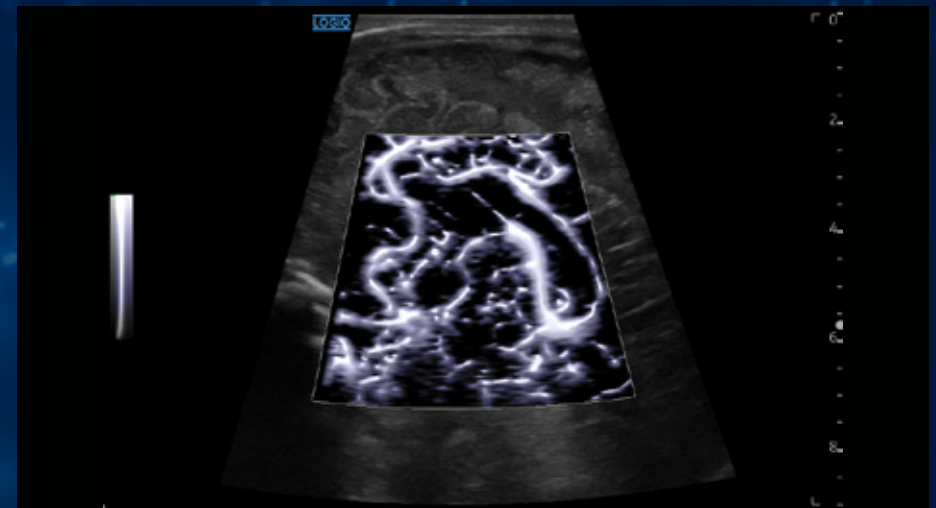
Concise Workflow

The LOGIQ E10 Series helps you achieve new levels of workflow efficiency, by leveraging the power of artificial intelligence.

AI-driven workflow – Improve exam speed and ease with a choice of AI-based tools, including Auto Lesion Segmentation, OB Measurement Assistant and Auto Doppler Assistant.

EZ Imaging – Enhance workflow with customizable probe pre-sets, simplified touch panel to reduce operator interactions, and quick patient set-up, resulting in 32% less time with 38% fewer keystrokes¹

Hepatic Assistant – Combines 2D Shear Wave Elastography and UGAP in a single exam with the push of a button.



MVI plus Radiantflow™ imaging of neonatal brain, L2-9-D

Smart Investment

Ultrasound systems for today, platform for tomorrow

The LOGIQ E10 Series is the smart choice in leadership ultrasound. Its multi-purpose versatility and scalability help you address a wide range of clinical applications and patient populations.

Our A to A digital platform is aware of and interacts with the digital ecosystem around it to provide the next level of assistance for the ultrasound user. SonoDefense, our six-layer approach to data security, helps keep your system safe and functional. And our latest digital support tools—including performance analytics, live clinical training, and advanced system diagnostics—help improve productivity.



1. Based on an internal GE study. Data available upon request.

© GE, 2021

Commercial availability of GE Healthcare medical systems is subject to meeting local requirements in a given country or region. Contact a GE Healthcare Representative for more information. Commercial availability of GE Healthcare medical systems is subject to meeting local requirements in a given country or region. GE Healthcare reserves the right to make changes in specifications and features shown herein, or discontinue the product described at any time without notice or obligation. GE, the GE Monogram, LOGIQ, cSound, Radiantflow, and XDclear are trademarks of GE. Android is a trademark of Google LLC. GE Healthcare, a division of GE. GE Medical Systems, Inc., doing business as GE Healthcare.

December 2021
JB04769XE

